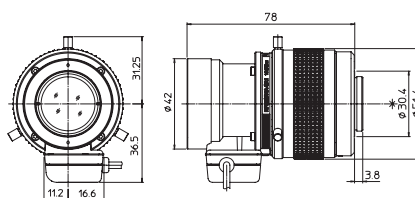
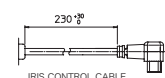


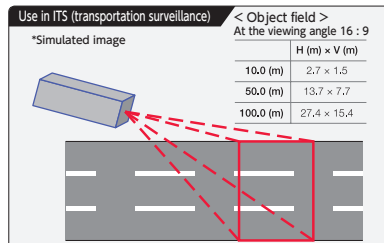
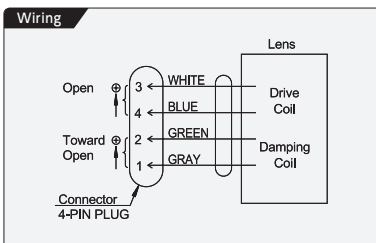
HF35SR4A-SA1L



Applicable camera (model) 1 2/3 1/2 1/3 1/4



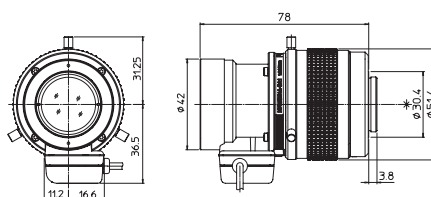
Unit : mm



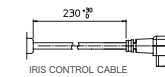
Fixed Focal Long Focal DC Auto Iris C Mount Metal Mount ND Filter Long Cable RoHS Compliant
FIXED TELE DC C-mt METAL ND 230 RoHS

HD 5MP

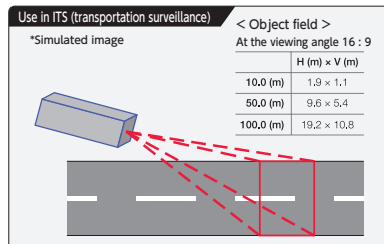
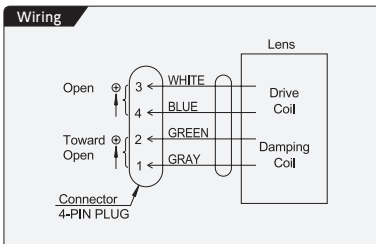
HF50SR4A-SA1L



Applicable camera (model) 1 2/3 1/2 1/3 1/4



Unit : mm



Fixed Focal Long Focal DC Auto Iris C Mount Metal Mount ND Filter Long Cable RoHS Compliant
FIXED TELE DC C-mt METAL ND 230 RoHS

HD 5MP

		Applicable to 2/3	HF35SR4A-SA1L	Applicable to 2/3	HF50SR4A-SA1L
Focal Length (mm)		35		50	
Iris Range		F2.0 - T360		F2.8 - T360	
Operation	Focus	Manual Auto(DC Type)*1			
	Iris				
Angle of View (H × V)	2/3"	14° 20' × 10° 46'		10° 03' × 7° 33'	
	1/2"	10° 27' × 7° 51'		7° 19' × 5° 30'	
	1/3"	7° 51' × 5° 53'		5° 30' × 4° 07'	
Angle of View (H × V)	2/3"	15° 36' × 8° 48'		10° 57' × 6° 10'	
	1/2"	11° 22' × 6° 25'		7° 58' × 4° 29'	
	1/1"	8° 33' × 4° 49'		5° 59' × 3° 22'	
Focus Range (From the Lens Front) (m)		∞ - 0.75		∞ - 1.0	
Mass (g)		270		260	

* 1 : The iris automatically closes when the camera is turned off.

※ Each of the above products is also available in manual type.