

pco.dicam C8

intensified 16 bit **sCMOS** camera



intensified
sCMOS technology
2048 x 2048 pixel

enhanced extinction
ratio gating

848 fps
@ full resolution



80G fiber optic
data interface

8 images in 32 ns
16 images in less than 1 μ s

exposure time 4 ns
with 25 mm intensifier

pco.



After more than 30 years of experience with image intensified cameras, we are proud to introduce the new pco.dicam C8 to you. The pco.dicam C8 is the next member of the multi-channel intensified camera series that exploits the full performance inherent to **scientific CMOS** sensor technology.

With its high-end optical beam splitters you are able to equally distribute the input light to the 8 image intensifiers. They are coupled with the pco.dicam C1 proven tandem lenses to the 16 bit 4.2 MPixel sCMOS sensor. It is the most flexible configuration of 16 individual exposure times and their corresponding interframing times, which makes the camera so unique. The 80G fiber optic based data interface (CLHS FOL) guarantees you uncompressed and robust 16 bit data transfer of 848 full frames per second via optical fiber over virtually any distance.

features & benefits

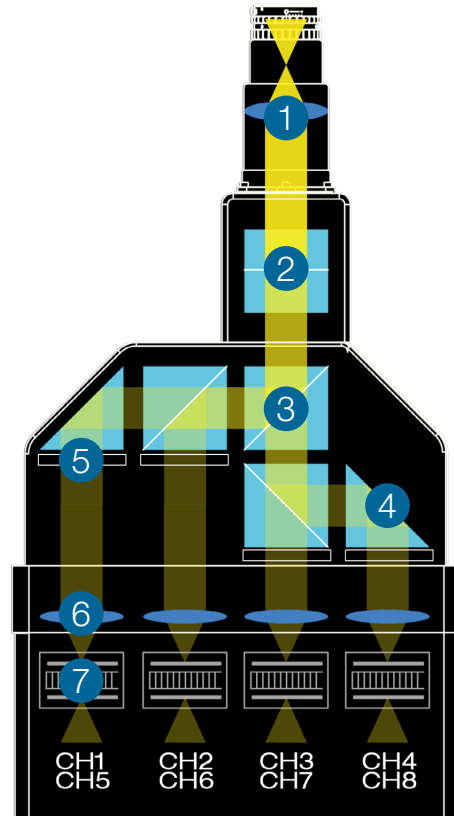
848 fps @ full 4.2 MPixel resolution	high frame rates at high resolution for imaging of dynamic processes
1.1 e⁻ readout noise	lowest readout noise of any gated intensified camera system
16 bit digitization	taking advantage of the higher dynamic range possible from high-end image intensifiers
eight 25 mm high resolution image intensifiers	doubles the optical resolution of conventional 18 mm image intensifiers
optical coupling via ultra-speed tandem lens	outstanding image quality with high transmission efficiency and no artifacts
tandem lens with 0.53 : 1 image scaling	full 25 mm diameter of intensifier output is imaged (lossless) onto an sCMOS sensor
80G fiber optic based data interface	fiber optic interface virtually covers any distance without deploying additional interface converters or signal amplifiers with immunity to EMI
8 x 890 MByte/s image data rate	highest sustained image data rate of any intensified camera system on the market; no limitations for recording duration; valid for camera system only
double shutter mode with 300 ns interframing time	two consecutive full resolution images with a configurable minimum interframing time of 300 ns on each of the 8 channels
4.2 MPixel sCMOS sensor	overcomes CCD limitations in terms of speed and sensitivity
enhanced extinction ratio gating	fast MCP gating for improved extinction ratio for the blue and uv part of the spectrum
additional optical trigger input	robust trigger transmission over long distance in EMC critical environments
EF lens control	convenient remote lens control for camera systems inaccessible during an experiment
selected highly homogeneous image intensifiers	uses best image intensifier quality available on the market
50 ns trigger to exposure start delay	ultra-fast camera reaction to trigger event
4 ns gating with 25 mm intensifier	captures fast transient phenomena
extensive and highly precise IN/OUT signaling	allows for perfect synchronization in any experimental setup as timing master or slave
configurable delay in steps of 1 ns	flexible adaptation to synchronization needs

camera components overview

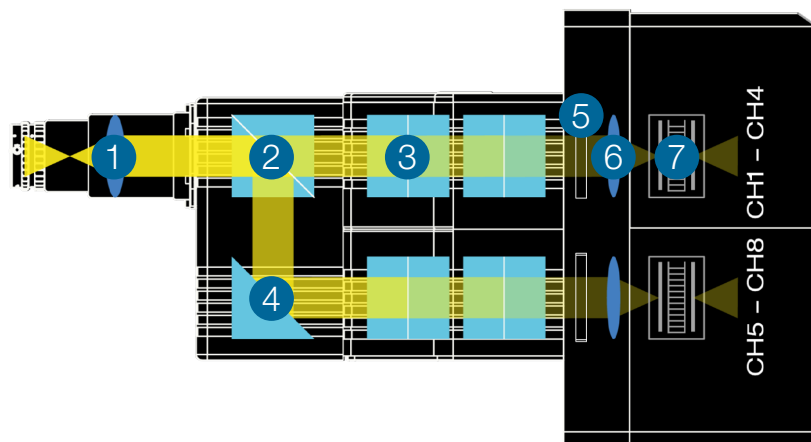
» top view

front part with tandem lens system and beam splitter prisms from the single input (top) to the 8 image intensifiers (bottom)

- 1 A collimator lens generates bundles of parallel rays with focus infinity.
- 2 A double prism redirects 50 % of the input light to the lower level of channels 5 - 8.
- 3 In both levels 3 double prisms provide a 50:50 beam distribution under a 90° angle.
- 4 Single prisms act as 99.9 % reflection mirrors.
- 5 Spectral filters can be mounted individually for each of the 8 light channels (CH1, CH2, CH3, CH4, CH5, CH6, CH7, CH8).
- 6 The imaging lenses of each channel focus the parallel bundles onto the photocathode of the image intensifier.
- 7 Image intensifier
(See more information on the next page.)

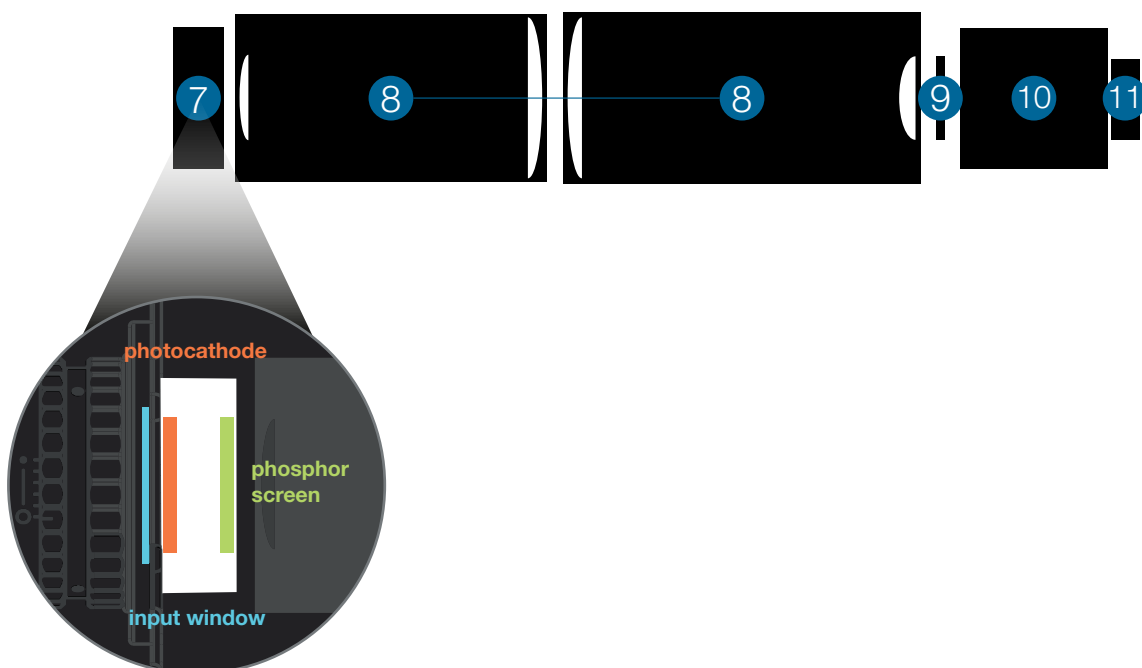


» side view



camera components overview

- 7 image intensifier
- 8 optical coupling lens system
- 9 sCMOS image sensor
- 10 camera system
- 11 10G fiber optic based interface





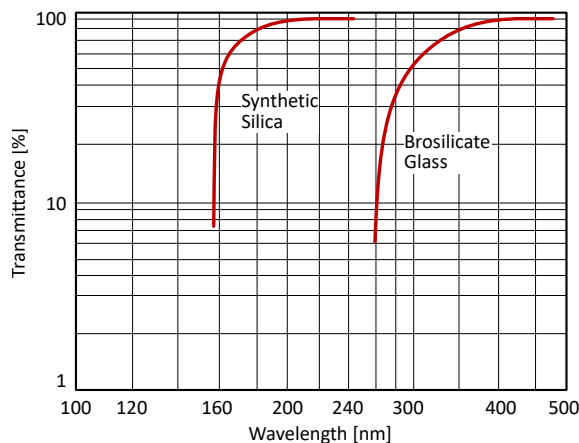
technical specifications

» image intensifier (8x)

type	HighRes micro channel plate (MCP) 6 μm channel
input window	synthetic silica, borosilicate
photocathode material	S20, GaAs, GaAsP (others on request)
image intensifier pitch distance	6 μm
image intensifier MCP type	single stage low resistance MCP for high strip current
MCP operational modes	continuous gated for enhanced extinction ratio
image intensifier diameter	25 mm (18 mm optional on request)
phosphor screen material	P43, P46
output window	glass
image intensifier system resolution	> 50 lp/mm @ 5 % MTF typical (depends on phosphor)
shortest gating time	4 ns

» image intensifier input window

Typical transmittance of image intensifier input window materials.



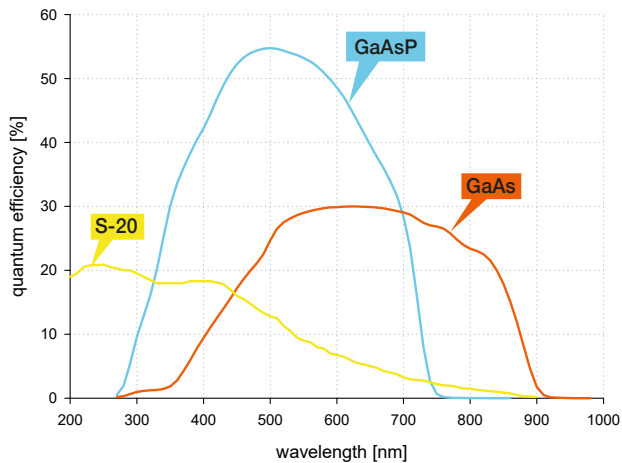
data courtesy of Hamamatsu Photonics

Due to the optical properties of the beam-splitter optics, there is no uv transmission below 380 nm. Intensifiers with MgF_2 input window are not available. Standard input window for S20 photocathodes is synthetic silica.

GaAs and GaAsP photocathodes are deposited on borosilicate glass.

» image intensifier photocathode characteristics

Spectral sensitivities of different photocathode materials:
S20 (multialkali), GaAs, GaAsP



data courtesy of Hamamatsu Photonics

photocathode material	peak wavelength [nm]	typical quantum efficiency at peak wavelength [%]	dark counts [s ⁻¹ /cm ²]
S20 (multialkali)	250	20	1500
GaAs	650	30	30,000
GaAsP	500	55	10,000

data courtesy of Hamamatsu Photonics

» image intensifier phosphor

phosphor	phosphor decay (typ.) to..		peak emission	typical efficiency
	.. 10 %	.. 1 %		
P43	1 ms	4 ms	545 nm	100 %
P46	0.2 - 0.4 µs	2 µs	530 nm	30 %

You can combine all photocathode materials with P43 or P46 phosphor. Whereas the P43 phosphor has a much brighter emission than the P46 phosphor, it has a rather long decay time, i.e. the time required till the phosphor emission fades out after the excitation by electron bombardement has been stopped. This decay time is therefore critical for fast image repetition rates primarily in double image application or when operating the camera in spectroscopic mode with line rates in the kHz range.



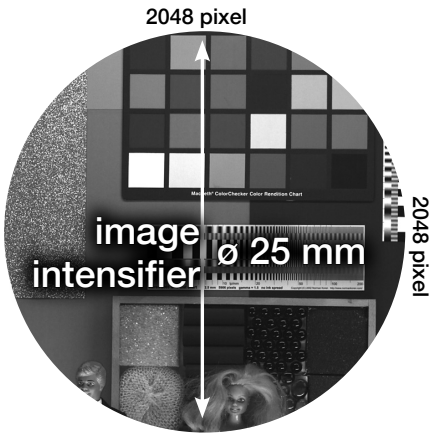
8

technical
specifications

» optical coupling lens system of the detector units (8x)

ultra-speed tandem lens between image intensifier & sCMOS

transmission efficiency	> 30 %
vignetting	< 3 %
resolution	> 60 lp/mm
scaling rates	$\beta=0.53$ for 25 mm intensifier



The projected image circle is completely covered by 2048 x 2048 6.5 μm pixels of the sCMOS detector. There is no “waste” of valuable intensifier area. As a consequence the four corners of the sCMOS sensor remain black. For a fast scan of just a few vertically centered lines - the camera module allows you to achieve more than 56,000 fps for such a ROI - the full line length of 2048 pixels is available.



9

technical specifications

» sCMOS image sensor

Each detector unit of this unique 8 channel design is equipped with a sCMOS image sensor.

type of sensor	scientific CMOS (sCMOS)
resolution (h x v)	2048 x 2048 active pixel
pixel size (h x v)	6.5 μm x 6.5 μm
sensor format / diagonal	13.3 mm x 13.3 mm / 18.8 mm
shutter mode	single image double image
MTF¹	76.9 lp/mm (theoretical)
fullwell capacity	15,000 e ⁻ for P46 phosphor 30,000 e ⁻ for P43 phosphor
readout noise²	1.1 _{med} / 1.5 _{rms} e ⁻ single image 2.2 _{med} / 2.5 _{rms} e ⁻ double image
dynamic range	13,600 : 1 (82.7 dB) for P46 phosphor 27,200 : 1 (88.7 dB) for P43 phosphor
quantum efficiency	58 % for P43 peak emission @ 545 nm 57 % for P46 peak emission @ 530 nm
spectral range	300 nm ... 1000 nm
dark current³	< 0.6 e ⁻ /pixel/s @ 7 °C
DSNU	1.0 e ⁻ _{rms}
PRNU	< 0.6 %
anti blooming factor	1 : 10,000

» frame rate table⁴

	C1	C4	C8
2048 x 2048	106 fps	424 fps	848 fps
2048 x 1024	210 fps	840 fps	1680 fps
2048 x 512	414 fps	1656 fps	3312 fps
2048 x 256	807 fps	3228 fps	6456 fps
2048 x 128	1535 fps	6140 fps	12,280 fps
2048 x 64	2795 fps	11,180 fps	22,360 fps
2048 x 32	4739 fps	18,956 fps	37,912 fps
2048 x 16	7266 fps	29,064 fps	58,128 fps
1920 x 1080	199 fps	796 fps	1592 fps
1600 x 1200	180 fps	720 fps	1440 fps
1280 x 1024	210 fps	840 fps	1680 fps
640 x 480	441 fps	1764 fps	3528 fps
320 x 240	858 fps	3432 fps	6864 fps

¹ Modulation transfer function.

² The readout noise values are given as median (med) and root mean square (rms) values due to the different noise models, which can be used for evaluation. All values are raw data without any filtering.

³ Measurements with dark current compensation.

⁴ Exposure time < 1 μs .

» frame rates

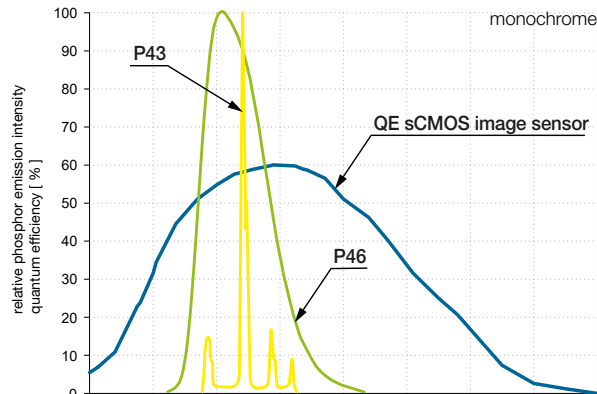
Due to the special 8 channel design of the pco.dicam C8 and the flexible timing possibilities, extremely high burst frame repetition rates are feasible. In single image mode you can record sequences of 8 ultra fast images and in double image mode sequences of 16 ultra fast images. Examples for such extreme frame repetition rates are given below.

» continuous imaging

2048 x 2048	848 fps
2048 x 256	up to 6400 fps
2048 x 16	> 56,000 fps

single image mode	8 images of 4 ns exposure time with 0 ns interframing time: 250,000,000 fps This 8 image sequence can be repeated every 9.6 ms
double image mode	16 images of 20 ns exposure time with 20 ns interframing time: 25,000,000 fps This 16 image sequence can be repeated every 38.4 ms

» perfect fit: phosphor emission vs. sCMOS quantum efficiency



This chart describes the spectral situation for the internal imaging of the image intensifier's phosphor output screen to the sCMOS sensor of the camera detector module. This imaging is done by the highly efficient tandem lens system.

Please note: The spectral sensitivity relevant for your experiment is solely determined by the QE curve of the photocathode material of the image intensifier (page 6).



10

technical specifications

» detector unit (8x)

frame rate	106 fps @ 2048 x 2048 pixel > 7000 fps @ 2048 x 16 pixel
dynamic range A/D⁵	16 bit
pixel scan rate	286.0 MHz
binning horizontal	x1, x2, x4
binning vertical	x1, x2, x4
region of interest (ROI)	horizontal: steps of 4 pixels vertical: steps of 1 pixel
non linearity	< 1 %
cooling method	+ 7 °C stabilized, 1 stage peltier with forced air (fan)
input signals	electrical trigger, arm input (TTL level, BNC connectors), gate disable (high-speed TTL input, BNC connectors)
output signals	gate/expos out monitor, user monitor output (TTL level, BNC connectors)
time stamp	in image (1 µs resolution)

» exposure modes

single image mode

exposure times	4, 10 ns fixed, 20 ns ... 250 ns (1 ns steps), 250 ns ... 1 s (10 ns steps)
delay times	0 ns ... 250 ns (1 ns steps), 250 ns ... 1 s (10 ns steps)
maximum repetition frequency	200 kHz sustained, 3.3 MHz burst

insertion delay	
trigger input to exposure out	19 ns
trigger input to optical open	49 ns
jitter	
trigger input to exposure out	35 ps rms
trigger input to optical open	150 ps rms

double image mode

exposure times	20 ns ... 1 ms (in 10 ns steps)
delay settings	0 ns ... 10 ms (in 10 ns steps)
interframing time on every channel	300 ns ... 10 ms (in 10 ns steps)

⁵ The high dynamic signal is simultaneously converted at high and low gain by two 11 bit A/D converters and the two 11 bit values are sophistically merged into one 16 bit value.

» general camera system

power supply	110 - 230 V
power consumption	360 W
weight	90 kg
operating temperature	+ 10 °C ... + 40 °C
operating humidity range	10 % ... 80 % (non-condensing)
storage temperature range	- 10 °C ... + 60 °C
optical mount	F-mount optional: Canon mount
lens remote controller	electronic control for Canon EF lenses
maximum cable length	10 km (CLHS FOL)
input signals	master trigger electrical and optical
CE / FCC certified	yes



11

technical
specifications

» camera interface (8x)

data transfer	Camera Link HS, FOL (Single F2, 1X1, S10) two 4 port frame grabber for PCI Express
maximum cable length	10 km (CLHS FOL)
master input signals	optical trigger (FOL), electrical trigger, arm input (TTL level, BNC connectors)
additional input signals per channel	electrical trigger, arm input (TTL level, BNC connectors), gate disable (high-speed TTL input, BNC connectors)
additional output signals per channel	gate/expos out monitor, user monitor output (TTL level, BNC connectors)



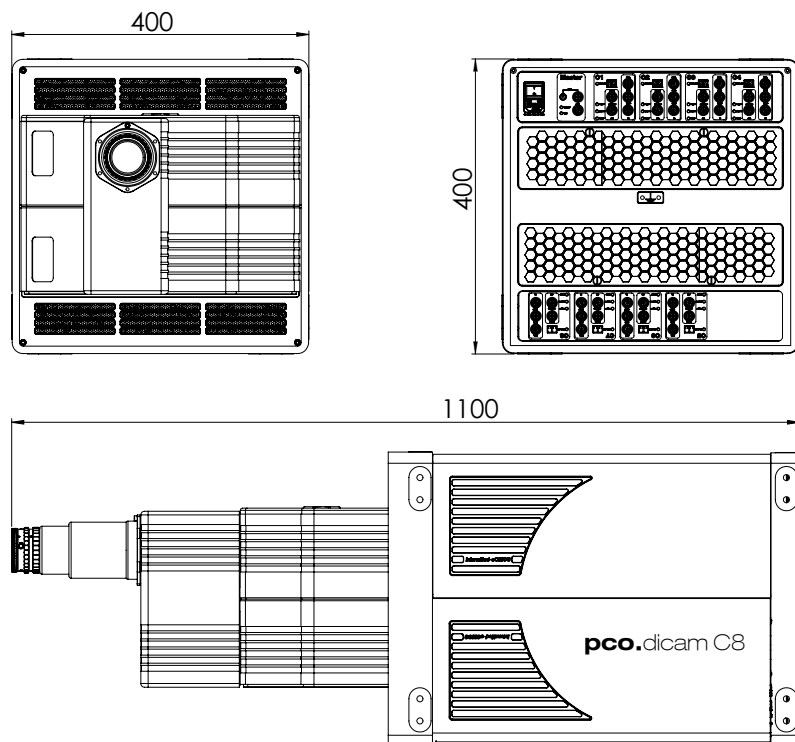
technical specifications

» lens remote controller

The optional Canon lens controller enables you to connect electronic EF and EF-S Canon lenses allowing to remote control focus and aperture of those lenses.

» dimensions

Camera equipped with F-mount lens adapter. All dimensions are given in millimeter.



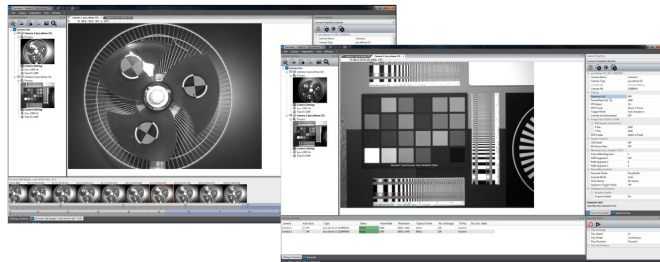
» camera view



» applications

laser induced incandescence (LII) | shock wave physics | laser induced breakdown spectroscopy (LIBS)
particle image velocimetry (PIV) | time resolved spectroscopy | plasmaphysics | laser induced fluorescence (LIF)
ballistics | combustion

» software



With pco.camware you control all camera settings, the image acquisition, and the storage of your image data. The pco.sdk is the complementary software development kit. It includes dynamic link libraries for user customization and integration on Windows PC platforms. Drivers for popular third party software packages are also available for you.

All this items like pco.camware, pco.sdk, and third party drivers are free to download at www.pco.de

» third party integrations



customization

» possible combinations⁶

photocathode	input window	phosphor
S20 selected	synthetic silica	P46
		P43 ⁶
GaAs standard	borosilicate	P46
		P43 ⁶
GaAs selected	borosilicate	P46
		P43 ⁶
GaAsP standard	borosilicate	P46
		P43 ⁶
GaAsP selected	borosilicate	P46
		P43 ⁶

⁶ P43 phosphor cannot be used, if 16 fast images with interframing times < 1 ms are required.

Image intensifiers with GaAs and GaAsP photocathode are available in two quality grades.

Standard	quality specified for central 16 mm x 16 mm square region corresponding to 1300 x 1300 pixel sCMOS sensor resolution
Selected	quality specified for 24.9 mm diameter area corresponding to full 2048 x 2048 pixel sCMOS sensor resolution, extinction ratio 10 times higher than standard grade, image intensifiers with S20 photocathode exclusively come in selected grade quality, contact our technical sales team for further details on the two quality grades

» select optical mount

F-mount
EF lens control

» select interface

type of fiber optic interface (CLHS FOL) module in camera and frame grabber

SM SFP+ up to 10 km
MM SFP+ up to 300 m
FOL cable length default: 10 m